

Product Data Sheet ACi 4400 MLR

**ebmpapst**

The engineer's choice



ACi 4400 MLR

INDEX

**1 General ..... 3**

**2 Mechanics ..... 3**

    2.1 General..... 3

    2.2 Connections..... 3

**3 Operating Data ..... 4**

    3.1 Electrical Interface - Input..... 4

    3.2 Electrical Operating Data ..... 4

    3.3 Electrical Features ..... 5

    3.4 Aerodynamics..... 6

    3.5 Sound Data..... 8

**4 Environment..... 8**

    4.1 General..... 8

    4.2 Climatic Requirements ..... 8

**5 Safety..... 9**

    5.1 Electrical Safety ..... 9

    5.2 Approval Tests..... 9

**6 Reliability..... 9**

    6.1 General..... 9

**1 General**

Fan type	Fan
Rotating direction looking at rotor	Clockwise
Airflow direction	Air outlet over struts
Bearing system	Ball bearing
Mounting position - shaft	Any

**2 Mechanics****2.1 General**

Width	120 mm	
Height	120 mm	
Depth	38,0 mm	
Diameter	0,0 mm	
Mass	0,275 kg	
Housing material	Plastic	
Impeller material	Plastic	
Max. torque when mounted across both mounting flanges	Wire outlet corner: 50 Ncm Remaining corners: 80 Ncm	
Screw size	ISO 4762 - M4 degreased, without an additional brace and without washer	
Rotor protrusion max.	0,6 mm	

**2.2 Connections**

Electrical connection	Plug	
Lead wire length	L = 0 mm	
Tolerance		
Tube length	See drawing	
Tolerance		
Wire size (AWG)	22	
Insulation diameter		
Plug	See drawing	
Contact	See drawing	



### 3 Operating Data

#### 3.1 Electrical Interface - Input

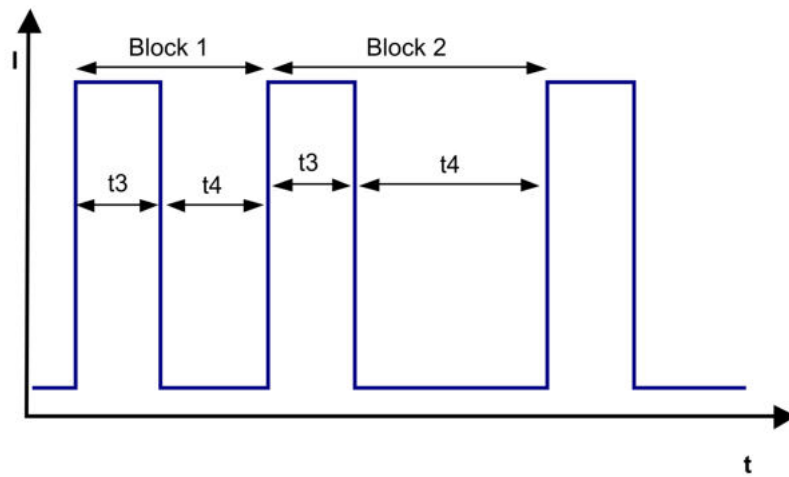
External voltage supply for input and output signals must be SELV conform.

#### 3.2 Electrical Operating Data

Features	Condition	Symbol	Values			
Voltage range Tolerance		U	100 V -10,0 %			240 V 10,0 %
Nominal voltage		$U_N$		115 V	230 V	
Frequency		f	50 Hz / 60 Hz			
Power consumption Tolerance	$\Delta p = 0$	P	2 W +/- 20 %			
Current consumption Tolerance	$\Delta p = 0$	$I_{RMS}$	25 mA +/- 20 %	22 mA +/- 20 %	15 mA +/- 20 %	15 mA +/- 20 %
Speed Tolerance	$\Delta p = 0$	n	1.850 1/min +/- 10 %			

### 3.3 Electrical Features

Electronic function	Speed-Controlled	
Locked rotor protection	Auto restart	



### 3.4 Aerodynamics

Measurement conditions: Measured with a double chamber intake rig acc. to DIN EN ISO 5801.  
 Normal air density = 1,2 kg/m<sup>3</sup>; Temperature 23°C +/- 3°C;  
 In the intake and outlet area should not be any solid obstruction within 0,5 m. Motor shaft horizontal.  
 The information is only valid under the specified test conditions and may be changed by the installation conditions. If there are deviations from the standard test conditions, the characteristic values must be checked under the installed conditions.

a) Operation condition:

1.850 1/min at free air flow

Frequency: 50 Hz

Nominal voltage: 230 V

Max. free-air flow ( $\Delta p = 0 / \dot{v} = \text{max.}$ )	100,0 m <sup>3</sup> /h
Max. static pressure ( $\Delta p = \text{max.} / \dot{v} = 0$ )	48 Pa

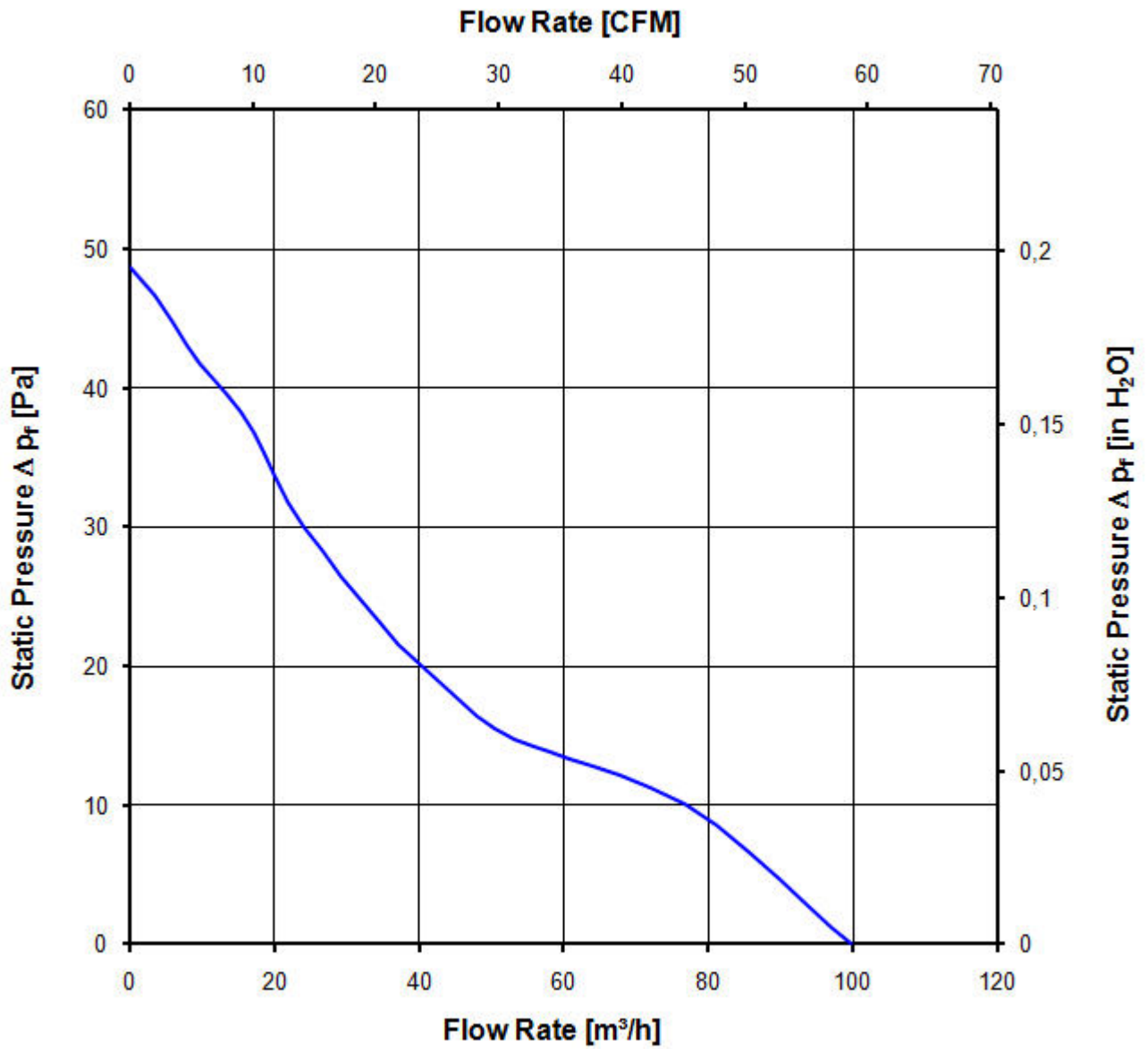
b) Operation condition:

1.850 1/min at free air flow

Frequency: 60 Hz

Nominal voltage: 115 V

Max. free-air flow ( $\Delta p = 0 / \dot{v} = \text{max.}$ )	
Max. static pressure ( $\Delta p = \text{max.} / \dot{v} = 0$ )	



### 3.5 Sound Data

Measurement conditions: Sound pressure level: 1 meter distance between microphone and the air intake.  
 Sound power level: Acc. to DIN 45635 part 38 (ISO 10302)  
 Measured in a semianchoic chamber with a background noise level of  $L_p(A) < 5 \text{ dB}(A)$   
 For further measurement conditions see chapter aerodynamics.

a) Operation condition:  
 1.850 1/min at free air flow                      Frequency: 50 Hz                      Nominal voltage: 230 V

Optimal operating point	84,0 m3/h @ 7 Pa	
Sound power level at the optimal operating point	4,1 bel(A)	
Sound pressure level at free air flow, measured in rubber bands	25,0 dB(A)	

b) Operation condition:  
 1.850 1/min at free air flow                      Frequency: 60 Hz                      Nominal voltage: 115 V

Optimal operating point		
Sound power level at the optimal operating point		
Sound pressure level at free air flow, measured in rubber bands		

## 4 Environment

### 4.1 General

Min. permitted ambient temperature TU min.	-40 °C	
Max. permitted ambient temperature TU max.	75 °C	
Min. permitted storage temperature TL min.	-40 °C	
Max. permitted storage temperature TL max.	80 °C	

### 4.2 Climatic Requirements

Humidity requirements	humid heat, cyclic; according to DIN EN 60068-2-30, 6 cycle	
Water exposure	None	
Dust requirements	Dust check; according to DIN EN 60068-2-68, 6g/m2d, 1 day	
Salt fog requirements	None	

Permitted application area:  
 The product is for the use in sheltered rooms with limited controlled temperature. Occasionally condensed water is allowed. Direct exposure to water must be avoided. Saline ambient conditions must be avoided.

Pollution degree 2 (according DIN EN 60664-1)  
 It occurs only non-conductive pollution. Occassionally, temporary conductivity caused by condensation occurs.



**5 Safety**

**5.1 Electrical Safety**

A verification of thermal conditions (normal and abnormal operation) as well as the protection against electric shock, ingress of solid foreign objects and water has to be done in conjunction with the appliance.

Test voltage HV type test	3000 V
Unit test voltage	VAC
Time type test HV	1 s
Insulation resistance	RI > 10 MOhm
Protection class	built-in fan

**5.2 Approval Tests**

CE	EC Declaration of Conformity	Yes
EAC	Eurasian Conformity	Yes
UL	Underwriters Laboratories	Yes / UL507, Electric Fans
VDE	Association for Electrical, Electronic and Information Technologies	Yes / Approval acc. to EN 60950 (VDE 0805) - Information technology equipment
CSA	Canadian Standards Association	Yes / C22.2 No. 113 Fans and Ventilators
CCC	China Compulsory Certification	Yes / GB 12350 Safety Requirements for small Power Motors

According to the guidelines on the application of Directive 2006/95/EC, chapter III: Scope of the "low voltage" directive, paragraph: Are "components" included in the scope? the following has to be applied:

However, some types of electrical devices, designed and manufactured for being uses as basic components to be incorporated into other electrical equipment, are such that their safety to a very large extent depends on how they are integrated into the final product and the overall characteristics of the final product. These basic components include electronic and certain other components.

Taking into account these objectives of the "Low Voltage" Directive, such basic components, the safety of which can only, to a very large extend, be assessed taking into account, how they are incorporated and for which a risk assessment cannot be undertaken, then they are not covered as such by the Directive. In particular, they must not be CE marked unless covered by other Community legislation that requires CE marking.

**6 Reliability**

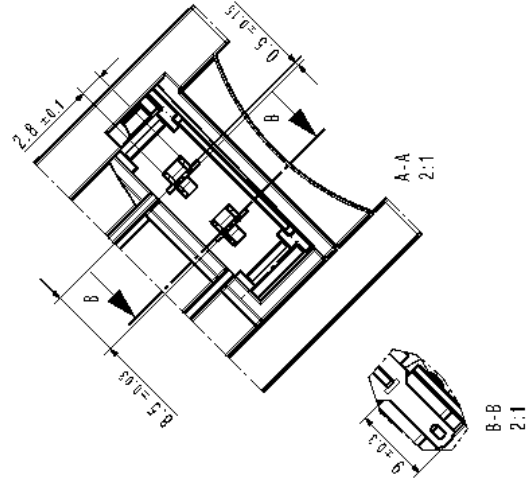
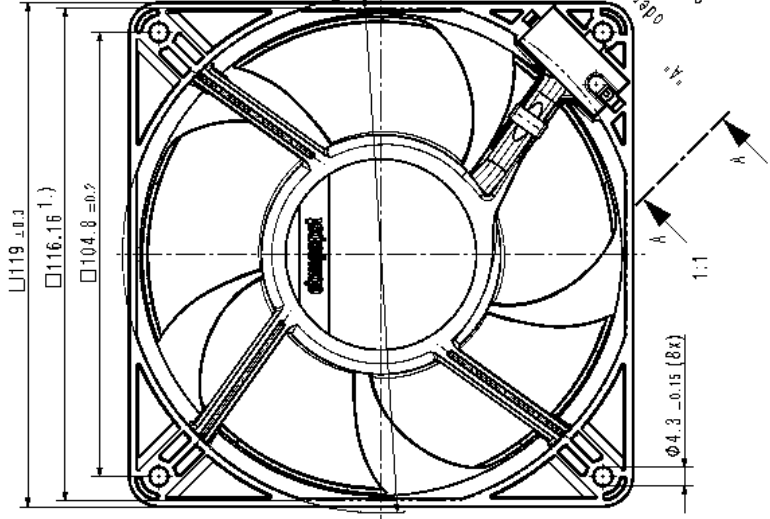
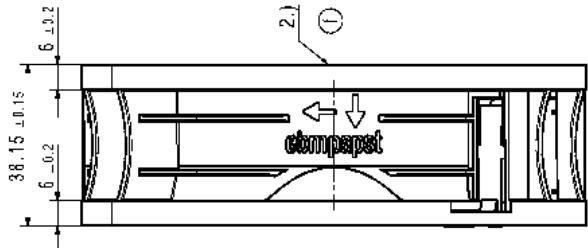
**6.1 General**

Life expectancy L10 at TU = 40 °C	65.000 h	
Life expectancy L10 at TU max.	25.000 h	
Life expectancy L10 acc. to IPC 9591 at TU = 40 °C	110.000 h	

Explosion proof design, and safety, in every case the use of accessories of the same type as those shown in the drawings is essential. All other accessories are not recommended.

Explosion proof design, and safety, in every case the use of accessories of the same type as those shown in the drawings is essential. All other accessories are not recommended.

- 1.) Maße für Montagewand/  
dimension for worktop mounting
- ① 2.) Rotorbüherstand bis max. 0.6 mm zulässig/  
Rotor excess length max. 0.6 mm allowable
- Kein Axialspiel bei Kugellager durch Federausgleich  
no axial clearance of ball bearings conditional in a pre-load spring



Typenbezeichnung / Description: Typennummer / Type No.: Typenname / Name:		Hersteller / Manufacturer: Firmenname / Company Name: Firmenadresse / Company Address:		Material / Material: Materialnummer / Material No.: Materialname / Material Name:	
Zeichnung / Drawing: Zeichnungsnummer / Drawing No.: Zeichnungsname / Drawing Name:		Fertigung / Production: Fertigungsnummer / Production No.: Fertigungsname / Production Name:		Montage / Assembly: Montageort / Assembly Location: Montagezeit / Assembly Time:	
Prüfprotokoll / Test Report: Prüfnummer / Test No.: Prüfdatum / Test Date:		Lagerort / Storage Location: Lagername / Storage Name:		Datum / Date: Unterschrift / Signature:	

